

POWER  
CATALOG



+1.815.363.8003 • [info@powerdentalgroup.com](mailto:info@powerdentalgroup.com)  
[www.powerdentalgroup.com](http://www.powerdentalgroup.com) • [www.mydentalusa.com](http://www.mydentalusa.com)

FULL  
CATALOG



# POWER FULCRUM FORCEPS KIT




Code: 5042 



# POWER TWIST ROOT PICK

Patent No. D700.331S/D700.329S

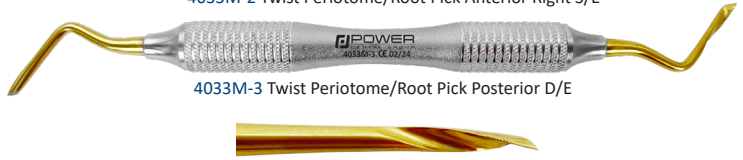
Code: 4033M 



4033M-1 Twist Periosteum/Root Pick Anterior Left S/E



4033M-2 Twist Periosteum/Root Pick Anterior Right S/E



4033M-3 Twist Periosteum/Root Pick Posterior D/E

# POWER FLEX DETACHABLE ELEVATOR KIT

Code: 4036 

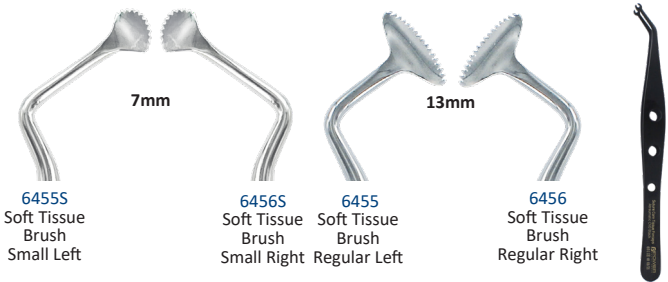


4036-1 Luxation STR 3.5mm  
4036-2 Power Spade  
4036-3 Apexo 301 2.7mm  
4036-4 Selden 34S 4.0mm  
4036-5 Selden 46 In 3.4mm  
4036-6 Selden 46R Out 3.4mm  
4036-8 3rd Molar Elevator

# POWER PERIOSTEUM RELEASE KIT

Patent No. USD700329S/USD743550S

Code: 6455FS 



7mm  
13mm  
6455S Soft Tissue Brush Small Left  
6456S Soft Tissue Brush Small Right  
6455 Soft Tissue Brush Regular Left  
6456 Soft Tissue Brush Regular Right



6511E Tissue Suture Corn Forceps 18cm

# POWER CROWN REMOVERS™

Patents No. D734, 852C

Code: 4638 



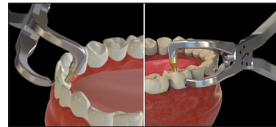
4638-2 Crown Remover (R)



4638-1 Crown Remover (L)



4636 2.0mm Diamond Bur Gold (5pack) For Regular Crowns  
4637 2.0mm Diamond Bur Silver (5pack) For Zirconia Crowns



# DR. KIM HEADLIGHT

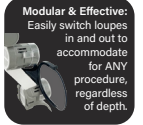
Code: KIMS 



KIMV Dr. Kim ErgoView Headlight



KIMS Dr. Kim Headlight



See More: 100,000 Lumens for full visibility ALL of the time.  
Full Control: Change brightness of LED quickly using dial control.  
Modular & Effective: Easily switch loupes in and out to accommodate for ANY procedure, regardless of depth.

# POWER FLAP RETRACTORS

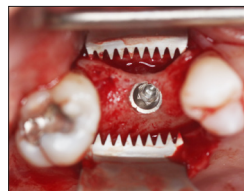
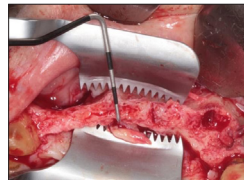
Code: 6458 



12mm



18mm



# POWER FLEX PERIOTOME KIT

Patent No. D684.264S/D700.331S

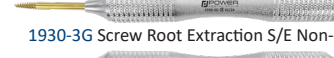
Code: 1930FSG 



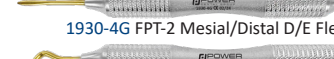
1930-1G STR S/E Flexible



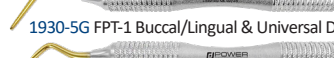
1930-2G CVD S/E Flexible



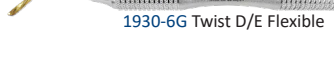
1930-3G Screw Root Extraction S/E Non-Flexible



1930-4G FPT-2 Mesial/Distal D/E Flexible



1930-5G FPT-1 Buccal/Lingual & Universal D/E Flexible



1930-6G Twist D/E Flexible



1930-3SG Screw Root Extraction Short Handle (Non-Flexible)



7821G Screw Root Extraction Anchor For Handpiece 30mm (Non-Flexible)

# POWER X-EXTRACTOR

Code: 7820 



- 1930-4G FPT-2 Mesial/Distal D/E Flexible
- 7820-1 Regular Anchor 27.5mm x 2.7mm
- 7820-1L Long Regular Anchor 31.5mm x 2.7mm
- 7820-1B Carbide Bur 27.5mm x 2.2mm
- 7820-2 Root Anchor 34.5mm x 2.2mm
- 7820-2B Carbide Bur 27.5mm x 1.8mm
- 7820-2L Long Root Anchor 36.5mm x 2.2mm

# PROSTHETIC SCREW & IMPLANT FIXTURE REMOVER KIT

Code: 7822 



# POWER IMPLANT GUIDE KIT™

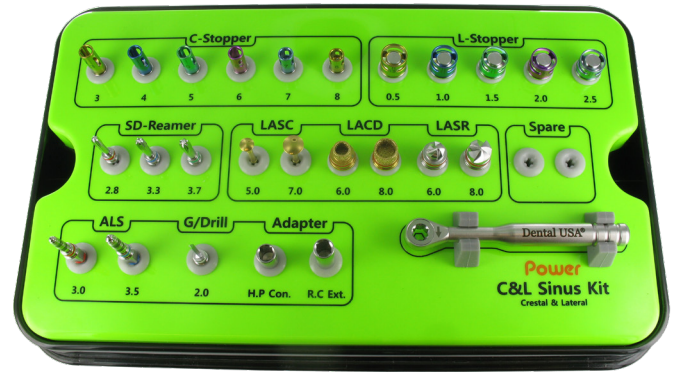
Code: 1979B 



- 1979-1 Anterior Self Centering Guide
- 1979-2 Posterior Self Centering Guide
- 1950-1 Multi 1 Implant Guide
- 1950-1 Multi 2 & 3 Implant Guide
- 1964N Edentulous Paralleling Guide

# C & L SINUS KIT: CRESTAL & LATERAL UNIVERSAL KIT

Code: 7826 



# POWER TORQUE DRIVER

Code: 1984 



**Drivers (1.2mm)** Head can be separated from body for sterilization.  
 Short: 23.5mm  
 Long: 30mm

# POWER GBR KIT

Code: 1981N 



- Guided Bone Regeneration Kit**
- |          |                |      |          |                                 |     |
|----------|----------------|------|----------|---------------------------------|-----|
| 1981N-1  | Screw 1.4x3mm  | 1pc  | 1981N-12 | Screw 1.6x12mm                  | 1pc |
| 1981N-2  | Screw 1.4x4mm  | 1pc  | 1981N-13 | Screw 2.0x6mm                   | 1pc |
| 1981N-3  | Screw 1.4x6mm  | 3pcs | 1981N-14 | Screw 2.0x8mm                   | 1pc |
| 1981N-4  | Screw 1.4x8mm  | 3pcs | 1981N-15 | Screw 2.0x10mm                  | 1pc |
| 1981N-5  | Screw 1.4x10mm | 2pcs | 1981N-16 | Screw 2.0x12mm                  | 1pc |
| 1981N-6  | Screw 1.4x12mm | 1pc  | 1981N-M  | Titanium Mesh 36x22x0.1mm       | 1pc |
| 1981N-7  | Screw 1.6x3mm  | 1pc  | 1981N-D  | Fix Screw Pilot Drill 1.2mm     | 1pc |
| 1981N-8  | Screw 1.6x4mm  | 1pc  | 1981N-20 | Screw Driver Short (Handpiece)  | 1pc |
| 1981N-9  | Screw 1.6x6mm  | 2pcs | 1981N-21 | Screw Driver Long (Hand Driver) | 1pc |
| 1981N-10 | Screw 1.6x8mm  | 2pcs | 1981N-22 | Screw Driver Handle             | 1pc |
| 1981N-11 | Screw 1.6x10mm | 1pc  |          |                                 |     |

# BLACK EDITION PROBE SET

Code: 1151 



1151-1B EXP23/CP12

1151-2B EXP23/UNC15

1151-3B UNC15/CP12

# POWER SURGICAL CURETTES

Code: 4126E 



4101SE 84S 2.2mm ±5%

4102SE 85S 2.8mm ±5%

4103SE 86S 3.3mm ±5%

4103ASE 86AS Off Angle 3.3mm ±5%



# ATRAUMATIC EXTRACTION FORCEPS

Code: 5040 



# FLEX PDL ELEVATOR GOLD SET

Patent No. D700331S/D700329S

Code: 3799 



# POWER TWIST

Patent No. D700331S / D700329S

Code: 4032 



Periotome Handle



Elevator Handle

# FLEX ELEVATOR SET

Code: 4034 



# POWER CENTRIFUGE MASTER II

Code: 7824N 



- Ten automatic programs and RPMs for each application
- Simple navigation
  - Select program
  - Rotate dial
  - Press dial
- Optimal and stable temperature
- Patented

*Sold Separately*



7824-6 PRF Cassette



2094 Bone Mixing Bowl



7425 Bone Tray



7824-4 Safety Butterfly Needle Set



7824-2 100 10mL Membrane Tubes  
7824-3 100 10mL I-PRF Liquid tubes



7824-5 Latex Free Tourniquet



2035T Bone Carrier



2034S Bone Packer IBP3/4 Serrated



5907S Super Cut, Dean 16.5cm



6506 Tissue Forceps



6834 PRF Carrier

# FLEX LUXATION SET

Patent No. USD700331S/USD700329S

Code: 4035 



# BLACK EDITION SCALER SET

Code: 1250T 

